



THE UNIVERSITY  
OF QUEENSLAND  
AUSTRALIA

CREATE CHANGE

# Research vs Postgraduate Coursework Studies in Science

Associate Professor Louise Kuchel  
Deputy Associate Dean Academic  
(Students)  
Faculty of Science

# Acknowledgement of Country

- The University of Queensland (UQ) acknowledges the Traditional Owners and their custodianship of the lands on which we meet.
- We pay our respects to their Ancestors and their descendants, who continue cultural and spiritual connections to Country.
- We recognise their valuable contributions to Australian and global society.

*The Brisbane River pattern from A Guidance Through Time  
by Casey Coolwell and Kyra Mancktelow.*





# Introduce yourselves

In chat or in person, please answer these questions:

- 1) Who are you?
- 2) What would you like to learn from this session?



# Overview

## Postgraduate Options

- Postgraduate Coursework
- Honours
- HDR (MPhil or PhD)

## Postgraduate Coursework

- Pathways to Postgraduate Coursework Programs

## Honours

- Pathways to Honours

## HDR

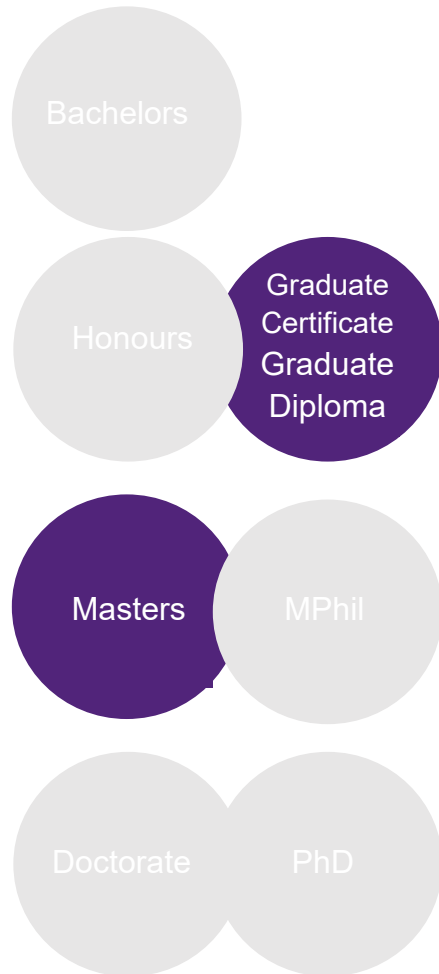
## Start dates

## Employability Development

## How do I choose?



# Postgraduate Coursework

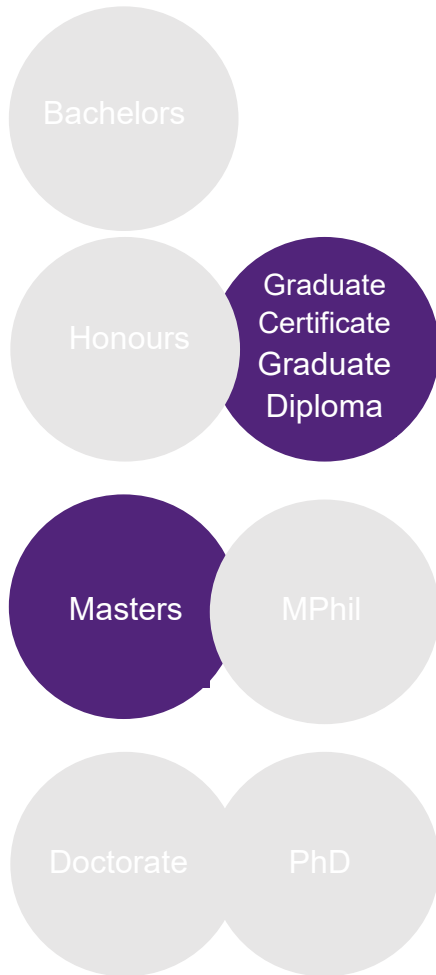


- Upgrade your current qualifications and gain a competitive employment advantage
- Preparation for promotion or career change
- Study FT or PT for 1 to 4 semesters (depending on the qualification and discipline)
- Placement available for some programs
- Fees apply (some CSPs are available)
- Access to the professional research environment
- Really get to know your academics – and get personal recommendations that mean something
- UQ Alumni Advantage



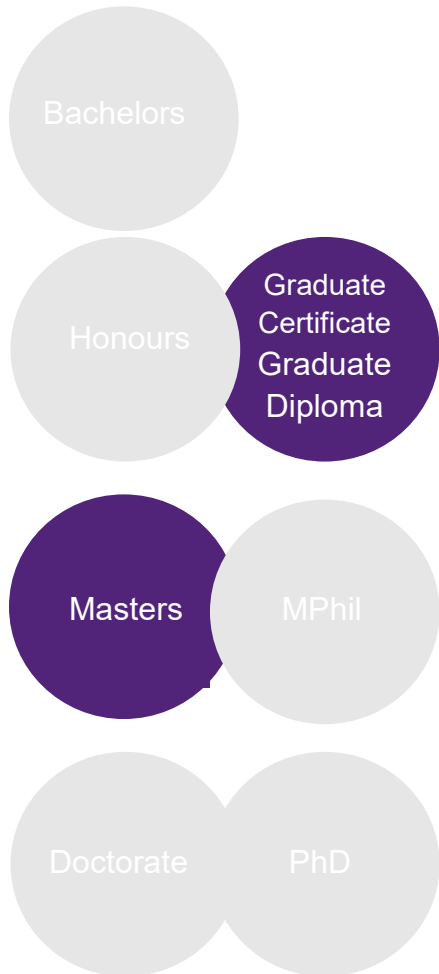


# Postgraduate Coursework Programs



- Agribusiness
- Agricultural Science
- Animal Science
- Bioinformatics
- Biotechnology
- Conservation Biology
- Conservation Science
- Data Science
- Environmental Management
- Financial Mathematics
- Food Science and Technology
- Geographic Information Science
- Magnetic Resonance and Positron Emission Tomography
- Magnetic Resonance Technology
- Molecular Biology
- Molecular Imaging Technology
- Quantum Technology
- Science
  - Mathematics
  - Physics
  - Statistics
- Urban and Regional Planning
- Veterinary Clinical Science
- Veterinary Science

# Pathways to Postgraduate Coursework Programs



- Bachelors Degree
  - related or unrelated field
- Minimum GPA applies
  - usually 5 on a 1 through 7 scale
- Graduate Certificate
  - 8 units, 4 courses
- Graduate Diploma
  - 16 units, 8 courses
- Masters
  - UQ is moving to 32 unit, 16 courses Masters programs as standard
  - Reduced duration of study is possible with credit for prior learning
- Check UQ Study Options
  - [www.study.uq.edu.au/study-options](http://www.study.uq.edu.au/study-options)

# Honours

Bachelors

Honours

Graduate  
Certificate

Graduate  
Diploma

Masters

MPhil

Doctorate

PhD

- Independent research project, supervised by an academic for 10 months (+/- coursework)
- Pathway to a Higher Degree by Research (HDR)

## Pathways to Honours

- Summer and Winter Research projects available for undergraduate students
- Some UQ programs offer Honours as part of a four year program
- (UQ students) Honours co-ordinator in each School within the Faculty
- (External students) Apply to the School, find a potential supervisor, and complete a School application form
- Pilot project of Honours with industry





# Higher Degrees in Research (HDR)

Bachelors

Honours

Graduate  
Certificate  
Graduate  
Diploma

Masters

MPhil

Doctorate

PhD

- Higher research degrees
- Master of Philosophy (MPhil) 1.5-2 years FT (or PT equivalent)
- Doctor of Philosophy (PhD) 3-4 years FT (or PT equivalent)
- Work closely with academic supervisors
- Develop independent research skills
- Generate new knowledge
- Do a placement in industry (<https://cdf.graduate-school.uq.edu.au/aprintern>)
- Work in research or lots of other pathways!



# Start Dates

Honours: Semester 1 or 2

Grad Cert/Dip or Masters: Semester 1 or 2 or Summer (program specific)

MPhil & PhD:

Research Quarter	Start Date
RQ1	1 Jan
RQ2	1 Apr
RQ3	1 Jul
RQ4	1 Oct

You can apply at any time for commencement in a fixed period within a research quarter

[graduate-school.uq.edu.au/research-quarters](https://graduate-school.uq.edu.au/research-quarters)





# What abilities will you build through Hons & PG study?



analytical



problem-solving



communication



innovation and  
entrepreneurship



critical thinking



data analysis





# What abilities will you build through Hons & PG study?



analytical



problem-solving



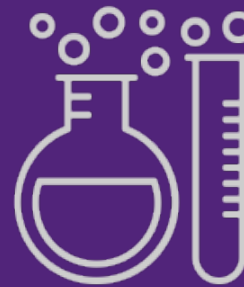
communication



innovation and  
entrepreneurship



creative thinking



experimental design



# What abilities will you build through Hons & PG study?



analytical



problem-solving



communication



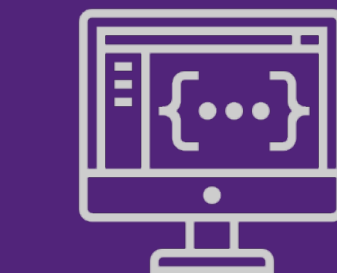
innovation and  
entrepreneurship



verbal



written



programming



# What abilities will you build through Hons & PG study?



analytical

+



problem-solving

+



communication

=



innovation and  
entrepreneurship



## How do you choose?

	Honours	PGCW (Grad Cert/Grad Dip)	PGCW (Masters)	PhD
Duration	1 year	6 to 18 months	2 years	3.5 – 4 years
Fees?	CSP (domestic)	Usually fees (some CSP)	Usually fees (some CSP)	No CSP (look for a scholarship)
Discipline change?	Not usually	Yes	Yes	Not usually
Research or courses?	Research focus (can have courses)	Course focus	Course focus Masters will have research	Research
Pathway afterwards	Work, additional study, or PhD	Work or Masters	Work or PhD	Work



# Questions?

Louise Kuchel  
[l.kuchel@uq.edu.au](mailto:l.kuchel@uq.edu.au)

 [facebook.com/uniofqld](https://facebook.com/uniofqld)

 [Instagram.com/uniofqld](https://Instagram.com/uniofqld)